



SHRI HARIHAR PRATISHTHAN'S
**GOVINDLAL KANHAIYALAL JOSHI
(NIGHT) COMMERCE COLLEGE, LATUR**



स्व. गोविंदलालजी जोशी

STUDENT SATISFACTION SURVEY
[ACADEMIC YEAR 2021 - 2022]

1. How much of the syllabus was covered in the class?

| Sr. No | Nature of Response | Responses |
|--------------|--------------------|-----------|
| 1 | Below 30% | 4 |
| 2 | 30 to 54% | 7 |
| 3 | 55 to 69% | 19 |
| 4 | 70 to 84% | 58 |
| 5 | 85% to 100 | 144 |
| Total | | 232 |

2. How well did the teachers prepare for the classes?

| Sr. No | Nature of Response | Responses |
|--------------|--------------------|-----------|
| 1 | wont teach at all | 3 |
| 2 | Indifferently | 2 |
| 3 | Poorly | 16 |
| 4 | Satisfactorily | 145 |
| 5 | Thoroughly | 66 |
| Total | | 232 |

3. How well were the teachers able to communicate?

| Sr. No | Nature of Response | Responses |
|---------------|---------------------------|------------------|
| 1 | very poor communication | 6 |
| 2 | Just satisfactorily | 6 |
| 3 | Sometimes effective | 25 |
| 4 | Always effective | 51 |
| 5 | Generally ineffective | 144 |
| Total | | 232 |

4. The teacher's approach to teaching can best be described as

| Sr. No | Nature of Response | Responses |
|---------------|---------------------------|------------------|
| 1 | Fair | 1 |
| 2 | Good | 4 |
| 3 | Very good | 53 |
| 4 | Excellent | 62 |
| 5 | Poor | 112 |
| Total | | 232 |

5. Fairness of the internal evaluation process by the teachers.

| Sr. No | Nature of Response | Responses |
|---------------|---------------------------|------------------|
| 1 | Unfair | 3 |
| 2 | Usually unfair | 4 |
| 3 | Usually fair | 17 |
| 4 | Always fair | 65 |
| 5 | Sometimes unfair | 143 |
| Total | | 232 |

6. Was your performance in assignments discussed with you?

| Sr. No | Nature of Response | Responses |
|---------------|---------------------------|------------------|
| 1 | Never | 2 |
| 2 | Rarely | 7 |
| 3 | Occasionally | 30 |
| 4 | Usually | 52 |
| 5 | Every time | 141 |
| Total | | 232 |

7.The institute takes active interest in promoting internship, student exchange, field visit opportunities for students.

| Sr. No | Nature of Response | Responses |
|--------------|--------------------|------------|
| 1 | Never | 6 |
| 2 | Rarely | 7 |
| 3 | Sometimes | 40 |
| 4 | Often | 50 |
| 5 | Regularly | 129 |
| Total | | 232 |

8.The teaching and mentoring process in your institution facilitates you in cognitive, social and emotional growth.

| Sr. No | Nature of Response | Responses |
|--------------|--------------------|------------|
| 1 | Not at all | 3 |
| 2 | Marginally | 6 |
| 3 | Moderately | 23 |
| 4 | Significantly | 110 |
| 5 | very well | 90 |
| Total | | 232 |

9. The institution provides multiple opportunities to learn and grow.

| Sr. No | Nature of Response | Responses |
|---------------|---------------------------|------------------|
| 1 | Strongly disagree | 1 |
| 2 | Disagree | 5 |
| 3 | Neutral | 27 |
| 4 | Agree | 82 |
| 5 | Strongly agree | 117 |
| Total | | 232 |

10. Teachers inform you about your expected competencies, course outcomes and programme outcomes.

| Sr. No | Nature of Response | Responses |
|---------------|---------------------------|------------------|
| 1 | Never | 0 |
| 2 | Rarely | 9 |
| 3 | Occasionally/Sometimes | 17 |
| 4 | Every time | 66 |
| 5 | Every time | 140 |
| Total | | 232 |

11. Your mentor does a necessary follow-up with an assigned task to you.

| Sr. No | Nature of Response | Responses |
|---------------|---------------------------|------------------|
| 1 | Rarely | 4 |
| 2 | Occasionally/Sometimes | 9 |
| 3 | Usually | 24 |
| 4 | Every time | 59 |
| 5 | I don't have a mentor | 136 |
| Total | | 232 |

12. The teachers illustrate the concepts through examples and applications.

| Sr. No | Nature of Response | Responses |
|---------------|---------------------------|------------------|
| 1 | Never | 1 |
| 2 | Rarely | 5 |
| 3 | Occasionally/Sometimes | 18 |
| 4 | Usually | 73 |
| 5 | Usually | 135 |
| Total | | 232 |

13.The teachers identify your strengths and encourage you with providing right level of challenges.

| Sr. No | Nature of Response | Responses |
|--------------|--------------------|-----------|
| 1 | Unable to | 1 |
| 2 | Slightly | 5 |
| 3 | Partially | 21 |
| 4 | Reasonably | 61 |
| 5 | Fully | 144 |
| Total | | 232 |

14.Teachers are able to identify your weaknesses and help you to overcome them.

| Sr. No | Nature of Response | Responses |
|--------------|------------------------|-----------|
| 1 | Never | 3 |
| 2 | Rarely | 8 |
| 3 | Occasionally/Sometimes | 28 |
| 4 | Usually | 55 |
| 5 | Every time | 138 |
| Total | | 232 |

15. The institution makes effort to engage students in the monitoring, review and continuous quality improvement of the teaching learning process.

| Sr. No | Nature of Response | Responses |
|--------------|--------------------|-----------|
| 1 | Strongly disagree | 0 |
| 2 | Disagree | 2 |
| 3 | Neutral | 21 |
| 4 | Agree | 82 |
| 5 | Strongly agree | 127 |
| Total | | 232 |

16. The institute/ teachers use student centric methods, such as experiential learning, participative learning and problem solving methodologies for enhancing learning experiences.

| Sr. No | Nature of Response | Responses |
|--------------|--------------------|-----------|
| 1 | Not at all | 3 |
| 2 | Very little | 15 |
| 3 | Some what | 18 |
| 4 | Moderate | 71 |
| 5 | To a great extent | 125 |
| Total | | 232 |

17. Teachers encourage you to participate in extracurricular activities.

| Sr. No | Nature of Response | Responses |
|--------------|--------------------|------------|
| 1 | Strongly disagree | 0 |
| 2 | Disagree | 9 |
| 3 | Neutral | 23 |
| 4 | Agree | 69 |
| 5 | Strongly agree | 131 |
| Total | | 232 |

18. Efforts are made by the institute/ teachers to inculcate soft skills, life skills and employability skills to make you ready for the world of work.

| Sr. No | Nature of Response | Responses |
|--------------|--------------------|------------|
| 1 | Not at all | 3 |
| 2 | Very little | 8 |
| 3 | Some what | 25 |
| 4 | Moderate | 71 |
| 5 | To a great extent | 125 |
| Total | | 232 |

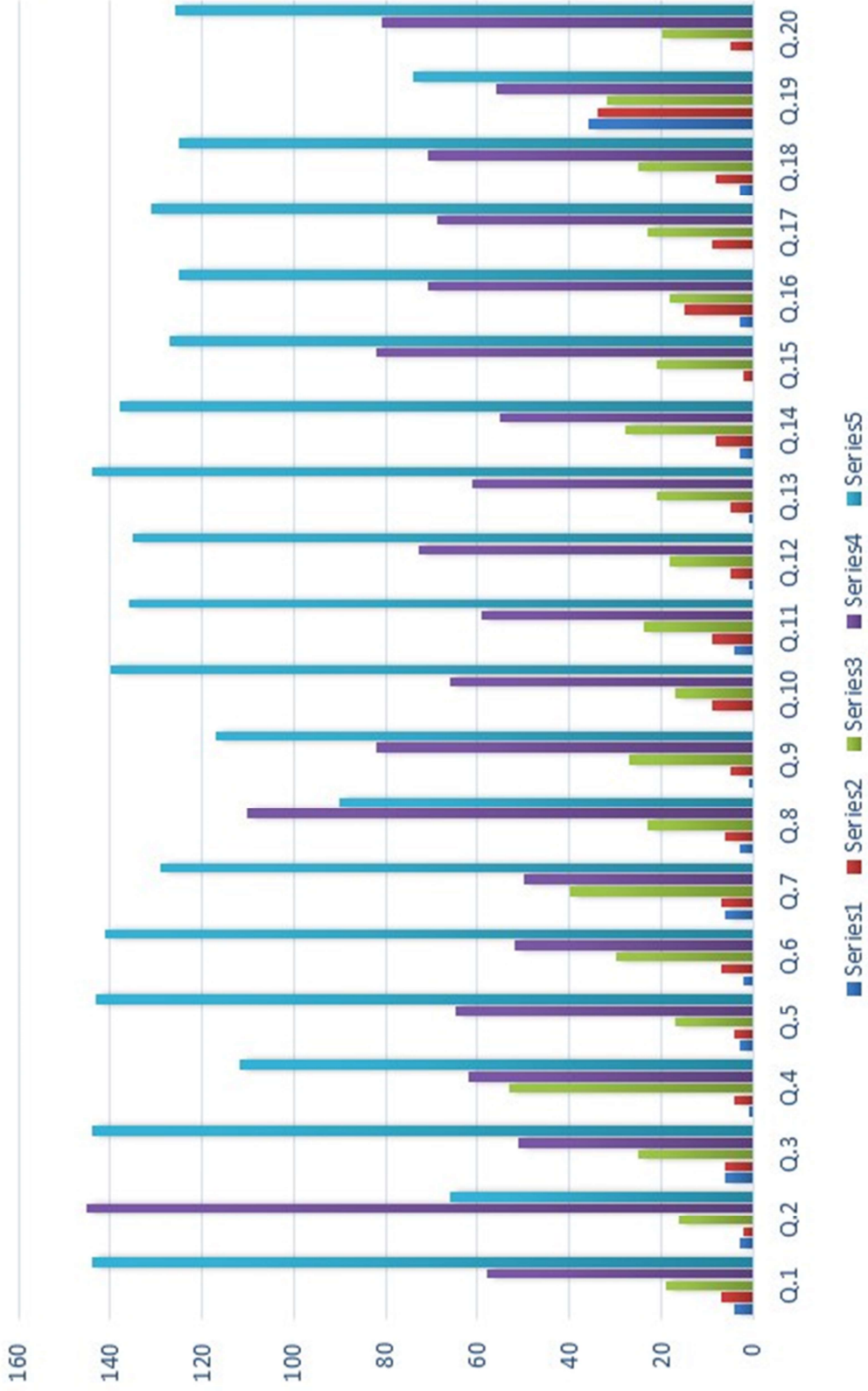
19. What percentage of teachers use ICT tools such as LCD projector, Multimedia, etc. while teaching.

| Sr. No | Nature of Response | Responses |
|--------------|--------------------|-----------|
| 1 | Below 29% | 36 |
| 2 | 30 - 49% | 34 |
| 3 | 50 - 69% | 32 |
| 4 | 70 - 89% | 56 |
| 5 | Above 90% | 74 |
| Total | | 232 |

20. The overall quality of teaching-learning process in your institute is very good.

| Sr. No | Nature of Response | Responses |
|--------------|--------------------|-----------|
| 1 | Strongly disagree | 0 |
| 2 | Disagree | 5 |
| 3 | Neutral | 20 |
| 4 | Agree | 81 |
| 5 | Strongly agree | 126 |
| Total | | 232 |

Student Satisfaction Survey 2021-22



| Q. No. | Student Satisfaction Survey 2021-22 | | | | | |
|--------|-------------------------------------|----|----|-----|-----|-------|
| | Response | | | | | Total |
| | 1 | 2 | 3 | 4 | 5 | |
| Q.1 | 4 | 7 | 19 | 58 | 144 | 232 |
| Q.2 | 3 | 2 | 16 | 145 | 66 | 232 |
| Q.3 | 6 | 6 | 25 | 51 | 144 | 232 |
| Q.4 | 1 | 4 | 53 | 62 | 112 | 232 |
| Q.5 | 3 | 4 | 17 | 65 | 143 | 232 |
| Q.6 | 2 | 7 | 30 | 52 | 141 | 232 |
| Q.7 | 6 | 7 | 40 | 50 | 129 | 232 |
| Q.8 | 3 | 6 | 23 | 110 | 90 | 232 |
| Q.9 | 1 | 5 | 27 | 82 | 117 | 232 |
| Q.10 | 0 | 9 | 17 | 66 | 140 | 232 |
| Q.11 | 4 | 9 | 24 | 59 | 136 | 232 |
| Q.12 | 1 | 5 | 18 | 73 | 135 | 232 |
| Q.13 | 1 | 5 | 21 | 61 | 144 | 232 |
| Q.14 | 3 | 8 | 28 | 55 | 138 | 232 |
| Q.15 | 0 | 2 | 21 | 82 | 127 | 232 |
| Q.16 | 3 | 15 | 18 | 71 | 125 | 232 |
| Q.17 | 0 | 9 | 23 | 69 | 131 | 232 |
| Q.18 | 3 | 8 | 25 | 71 | 125 | 232 |
| Q.19 | 36 | 34 | 32 | 56 | 74 | 232 |
| Q.20 | 0 | 5 | 20 | 81 | 126 | 232 |



Dr. Sachin M. Prayag
IQAC Coordinator

IQAC-Coordinator
Govindlal Kanhaiyalal Joshi
(Night) Commerce College, Latur



Dr. Sujata N. Chavan
I/c-Principal

I/c.Principal
Govindlal Kanhaiyalal Joshi
(Night) Commerce College, Latur