



ज्ञानम् परम् ध्येयम्

SHRI HARIHAR PRATISHTHAN'S
**GOVINDLAL KAHAIYALAL JOSHI
(NIGHT) COMMERCE COLLEGE, LATUR**



स्व. गोविंदलालजी जोशी

**STUDENT SATISFACTION SURVEY
[ACADEMIC YEAR 2020 – 2021]**

A. Please confirm this is the first and only time you answer this survey.

- a.) Yes [] b.) No []

B. Age: []

C. Gender:

- a.) Male [] b.) Female [] c.) Transgender []

D. What degree program are you pursuing now?

- a.) Bachelor's [] b.) Master's []

*** Instructions to Fill the Questionnaire ***

- All questions should be compulsorily attempted.
- Each question has five responses, choose the most appropriate one.

Criterion II – Teaching-Learning and Evaluation Student Satisfaction Survey on Teaching Learning Process.

Q.1.] How much of the syllabus was covered in the class?

- 4.) 85 to 100% [] 3.) 70 to 84% []
2.) 55 to 69% [] 1.) 30 to 54% [] 0.) Below 30% []

Q.2.] How well did the teachers prepare for the classes?

- 4.) Thoroughly [] 3.) Satisfactorily []
2.) Poorly [] 1.) Indifferently [] 0.) Won't Teach at all []

Q.3.] How well were the teachers able to communicate?

- 4.) Always Effective [] 3.) Sometimes Effective []
2.) Just Satisfactorily [] 1.) Generally Ineffective [] 0.) Very Poor Communication []

Q.4.] The teacher's approach to teaching can best be described as

- 4.) Excellent [] 3.) Very Good []
2.) Good [] 1.) Fair [] 0.) Poor []

Q.5.] Fairness of the internal evaluation process by the teachers.

- 4.) Always fair [] 3.) Usually fair []
2.) Sometimes unfair [] 1.) Usually unfair [] 0.) Unfair []

Q.6] Was your performance in assignments discussed with you?

- 4.) Every time [] 3.) Usually []
2.) Occasionally/Sometimes [] 1.) Rarely [] 0.) Never []

Q.7] The institute takes active interest in promoting internship, student exchange, field visit opportunities for students.

- 4.) Regularly [] 3.) Often []
2.) Sometimes [] 1.) Rarely [] 0.) Never []

Q.8.] The teaching and mentoring process in your institution facilitates you in cognitive, social and emotional growth.

- 4.) Significantly [] 3.) Very well []
2.) Moderately [] 1.) Marginally [] 0.) Not at all []

Q.9.] The institution provides multiple opportunities to learn and grow.

- 4.) Strongly agree [] 3.) Agree []
2.) Neutral [] 1.) Disagree [] 0.) Strongly disagree []

Q.10] Teachers inform you about your expected competencies, course outcomes and programme outcomes.

- 4.) Every time [] 3.) Usually []
2.) Occasionally/Sometimes [] 1.) Rarely [] 0.) Never []

Q.11] Your mentor does a necessary follow-up with an assigned task to you.

- 4.) Every time [] 3.) Usually []
2.) Occasionally/Sometimes [] 1.) Rarely [] 0.) I don't have a mentor []

Q.12] The teachers illustrate the concepts through examples and applications.

- 4.) Every time [] 3.) Usually []
2.) Occasionally/Sometimes [] 1.) Rarely [] 0.) Never []

Q.13] The teachers identify your strengths and encourage you with providing right level of challenges.

- 4.) Fully [] 3.) Reasonably []
2.) Partially [] 1.) Slightly [] 0.) Unable to []

Q.14.] Teachers are able to identify your weaknesses and help you to overcome them.

- 4.) Every time [] 3.) Usually []
2.) Occasionally/Sometimes [] 1.) Rarely [] 0.) Never []

Q.15.] The institution makes effort to engage students in the monitoring, review and continuous quality improvement of the teaching learning process.

- 4.) Strongly agree [] 3.) Agree []
2.) Neutral [] 1.) Disagree [] 0.) Strongly disagree []

Q.16.] The institute/ teachers use student centric methods, such as experiential learning, participative learning and problem solving methodologies for enhancing learning experiences.

- 4.) To a great extent [] 3.) Moderate []
2.) Some what [] 1.) Very little [] 0.) Not at all []

Q.17.] Teachers encourage you to participate in extracurricular activities.

- 4.) Strongly agree 3.) Agree []
2.) Neutral [] 1.) Disagree [] 0.) Strongly disagree []

Q.18.] Efforts are made by the institute/ teachers to inculcate soft skills, life skills and employability skills to make you ready for the world of work.

- 4.) To a great extent [] 3.) Moderate []
2.) Some what [] 1.) Very little [] 0.) Not at all []

Q.19.] What percentage of teachers use ICT tools such as LCD projector, Multimedia, etc. while teaching.

- 4.) Above 90% [] 3.) 70 – 89% []
2.) 50 – 69% [] 1.) 30 – 49% [] 0.) Below 29% []

Q.20.] The overall quality of teaching-learning process in your institute is very good.

- 4.) Strongly agree 3.) Agree []
2.) Neutral [] 1.) Disagree [] 0.) Strongly disagree []

Q.21.] Give three observation / suggestions to improve the overall teaching – learning experience in your institution.

- a)
b)
c)

ANALYSIS OF THE SURVEY

Q.1 How much of the syllabus was covered in the class?

Marks	Particulars	No. of Respondents
0	Below 30%	0
1	30 to 54%	0
2	55 to 69%	15
3	70 to 84%	19
4	85 to 100%	86

Q.2 How well did the teachers prepare for the classes?

Marks	Particulars	No. of Respondents
0	Won't teach at all	0
1	Indifferently	0
2	Poorly	0
3	Satisfactorily	18
4	Thoroughly	102

Q.3 How well were the teachers able to communicate?

Marks	Particulars	No. of Respondents
0	Very poor communication	0
1	Generally ineffective	0
2	Just satisfactorily	9
3	Sometimes effective	15
4	Always effective	96

Q.4 The teacher's approach to teaching can best be described as

Marks	Particulars	No. of Respondents
0	Poor	0
1	Fair	6
2	Good	18
3	Very good	42
4	Excellent	54

Q.5 Fairness of the internal evaluation process by the teachers?		
Marks	Particulars	No. of Respondents
0	Unfair	0
1	Usually unfair	0
2	Sometimes unfair	0
3	Usually fair	15
4	Always fair	105

Q.6 Was your performance in assignments discussed with you?		
Marks	Particulars	No. of Respondents
0	Never	4
1	Rarely	6
2	Occasionally/Sometimes	18
3	Usually	28
4	Every time	64

Q.7 The institute takes active interest in promoting internship, student exchange, and field visit opportunities for students?		
Marks	Particulars	No. of Respondents
0	Never	0
1	Rarely	0
2	Sometimes	18
3	Often	82
4	Regularly	20

Q.8 The teaching and mentoring process in your institution facilitates you in cognitive, social and emotional growth?		
Marks	Particulars	No. of Respondents
0	Not at all	0
1	Marginally	0
2	Moderately	22
3	Very well	38
4	Significantly	60

Q.9 The institution provides multiple opportunities to learn and grow.		
Marks	Particulars	No. of Respondents
0	Strongly disagree	0
1	Disagree	0
2	Neutral	4
3	Agree	22
4	Strongly agree	94

Q.10 Teachers inform you about your expected competencies, course outcomes and programme outcomes.		
Marks	Particulars	No. of Respondents
0	Never	0
1	Rarely	0
2	Occasionally/Sometimes	6
3	Usually	10
4	Every time	104

Q.11 Your mentor does a necessary follow-up with an assigned task to you		
Marks	Particulars	No. of Respondents
0	I don't have a mentor	0
1	Rarely	0
2	Occasionally/Sometimes	8
3	Usually	14
4	Every time	98

Q.12 The teachers illustrate the concepts through examples and applications		
Marks	Particulars	No. of Respondents
0	Never	0
1	Rarely	0
2	Occasionally/Sometimes	8
3	Usually	16
4	Every time	96

Q.13 The teachers identify your strengths and encourage you with providing right level of challenges

Marks	Particulars	No. of Respondents
0	Unable to	0
1	Slightly	4
2	Partially	10
3	Reasonably	36
4	Fully	70

Q.14 Teachers are able to identify your weaknesses and help you to overcome them

Marks	Particulars	No. of Respondents
0	Never	0
1	Rarely	0
2	Occasionally/Sometimes	18
3	Usually	32
4	Every time	70

Q.15 The institution makes effort to engage students in the monitoring, review and continuous quality improvement of the teaching learning process.

Marks	Particulars	No. of Respondents
0	Strongly disagree	0
1	Disagree	0
2	Neutral	16
3	Agree	32
4	Strongly agree	72

Q.16 The institute/ teachers use student centric methods, such as experiential learning, participative learning and problem solving methodologies for enhancing learning experiences.

Marks	Particulars	No. of Respondents
0	Not at all	0
1	Very little	0
2	Some what	15
3	Moderate	45
4	To a great extent	60

Q.17 Teachers encourage you to participate in extracurricular activities

Marks	Particulars	No. of Respondents
0	Strongly disagree	0
1	Disagree	0
2	Neutral	0
3	Agree	12
4	Strongly agree	108

Q.18 Efforts are made by the institute/ teachers to inculcate soft skills, life skills and employability skills to make you ready for the world of work.

Marks	Particulars	No. of Respondents
0	Not at all	0
1	Very little	0
2	Some what	4
3	Moderate	16
4	To a great extent	100

Q.19 What percentage of teachers use ICT tools such as LCD projector, Multimedia, etc. while teaching.

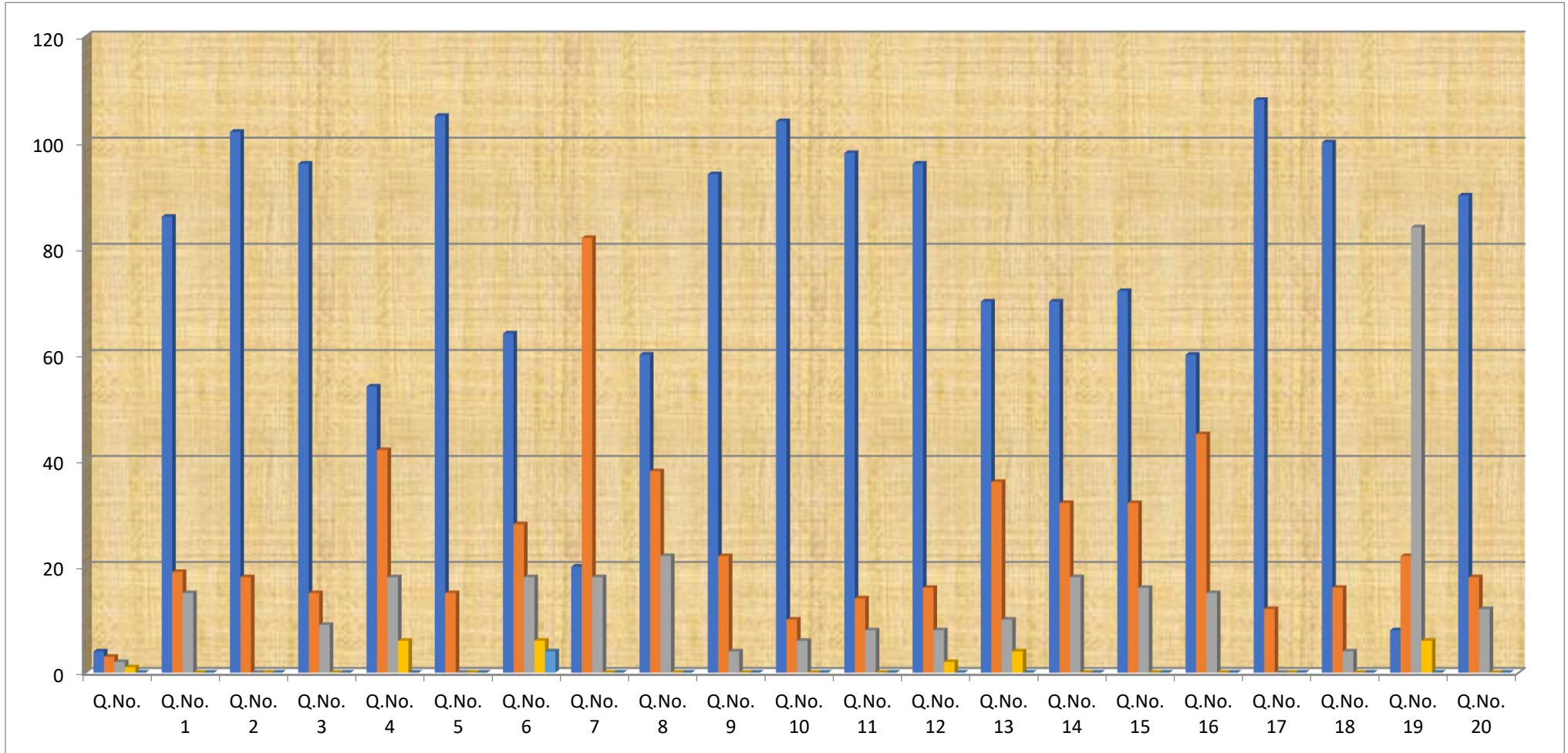
Marks	Particulars	No. of Respondents
0	Below 29%	0
1	30 – 49%	6
2	50 – 69%	84
3	70 – 89%	22
4	Above 90%	8

Q.20 The overall quality of teaching-learning process in your institute is very good

Marks	Particulars	No. of Respondents
0	Strongly disagree	0
1	Disagree	0
2	Neutral	12
3	Agree	18
4	Strongly agree	90

RESULT AND REPORT OF THE SURVEY

Q.No.	4	3	2	1	0
Q.No. 1	86	19	15	0	0
Q.No. 2	102	18	0	0	0
Q.No. 3	96	15	9	0	0
Q.No. 4	54	42	18	6	0
Q.No. 5	105	15	0	0	0
Q.No. 6	64	28	18	6	4
Q.No. 7	20	82	18	0	0
Q.No. 8	60	38	22	0	0
Q.No. 9	94	22	04	0	0
Q.No. 10	104	10	06	0	0
Q.No. 11	98	14	8	0	0
Q.No. 12	96	16	8	2	0
Q.No. 13	70	36	10	4	0
Q.No. 14	70	32	18	0	0
Q.No. 15	72	32	16	0	0
Q.No. 16	60	45	15	0	0
Q.No. 17	108	12	0	0	0
Q.No. 18	100	16	4	0	0
Q.No. 19	8	22	84	6	0
Q.No. 20	90	18	12	0	0



Sachin

**IQAC Co-Ordinator
Dr. Sachin M. Prayag**

Sujata N. Chavan

**I/C Principal
Dr. Sujata N. Chavan**